



OFFICE UPDATE

A school that values Community, Confidence, Ambition and Respect.

Term 1, Week 8

Monday:

- **Queens Birthday**—no school

Tuesday:

- **PP Day** —no students at school

Wednesday:

-

Thursday:

-

Friday:

- Canteen Closed
- ISS Away vs Eltham College

See last page for upcoming dates

Never to early to plan for 2023

Please ensure your Prep 2023 enrolment form is handed in as soon as possible



Phone: 9437 1917

Address: 1570 Main Road, Research, Victoria, 3095

Email: research.ps@education.vic.gov.au

Website: www.researchps.vic.edu.au

Compass: <https://researchps-vic.compass.education/>

Social: www.facebook.com/researchps

The Update: Published fortnightly

School Administration

2023 Prep Enrolments

Keep your Prep enrolments for 2023 coming in.

If you have a child starting Prep in 2023, please get your enrolment form in as soon as possible. Also, if you know anyone who has talked about enrolling their child at Research Primary School (this is for any year level) in 2023, please let them know that it is a good time to get in their paperwork! Our early planning begins in Term 3 with things being finalised as early as possible in Term 4.

Professional Planning Day

Tuesday, 14 June is a no students at school day. School Council approved a Professional Planning Day

RATs

A box of 5 RATs have been sent home with students tonight. Please check your child's bag.

Working with Children Check

All volunteers and helpers in schools must hold a current Working with Children Check, this check is free and applications can be made via this link.

<https://www.workingwithchildren.vic.gov.au>

Excursions are back!

Years 3 & 4—Melbourne Museum



The Year 3 and 4 students had a fabulous and informative day at the First Peoples Place & Culture Exhibition recently. So much to see and learn. Highly recommended!

PE News

Interschool Sport

On Friday, June 17th, we play an away game against Eltham College. All games will be played at Eltham College. *Please note: It is the bus company's requirement that all year 3—6 students wear a mask while travelling on buses.*

RPS House Athletics

RPS House Athletics has been rearranged for Tuesday 21st June.

District Cross County

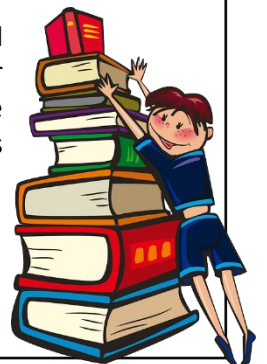


Congratulations and well done to Mia & Finn who both ran in the EDPSSA District Cross County yesterday, Thursday 9 June., at Bundoora Park. Mia run in the 3km and Finn in the 2km.

Library News

Book Fair

Our Scholastic Book Fair this year was brilliant with sales reaching \$1,971.50, which well exceeded our goal of \$1,500! This meant we have nearly \$400 added to our library budget for future purchases. We also selected \$110 worth of books from the fair for our library. A huge thank you to all the families who purchased and a very special thank you to our volunteer helpers who ran the sales!



Canteen News

Next Canteen Dates:

Countersales **Tuesday 21st June** Lunch Orders & Countersales **Term 3** dates TBC

Please note that the canteen is **always closed** on the last day of term.

If you are in a position to offer a little help please contact the school, they will pass your details on. research.ps@education.vic.gov.au - please make sure you have a current working with children's check. **Gabi F**

Unifrom News

Beanies (\$20) and Puffer Jackets (\$75) are in stock and rolling out the door. An updated order form has been sent via COMPASS.

Community News:



WE SPECIALIZE
IN LESSONS
FOR
BEGINNERS

TENNIS LESSONS

RESEARCH TENNIS CLUB

SPECIAL OFFER!!

ENROL NOW & RECEIVE A
30% DISCOUNT
AND A NEW RACKET FOR
FREE!

FOR MORE INFORMATION
TEL: 9432-3706
WEB: WWW.TOPLINETENNIS.COM
EMAIL: INFO@TOPLINETENNIS.COM

TOPLINE TENNIS

ANZ HOT SHOTS



nab AFL Auskick

NAB AFL AUSKICK BURST HAS ARRIVED!

The Auskick Burst program gives kids a taste of Auskick for a fraction of the price.

For just \$55 Auskickers Burst into fun games learning the skills of AFL.
They also receive their very own footy!

Research Junior Football Club
Research Park, 1459 Main Road, Research

Sign up for Auskick Burst today!

Visit play.afl/auskick

ResearchAuskick@gmail.com.au

R-J-F.C. SEARCHERS

Community News:



REGISTRATION NOW OPEN!




COME AND JOIN US!
We are a small club who welcome new player's and families. Our passion is basketball at any level! We believe that friendship & fun is a major part of junior domestic basketball. We play in the Diamond Valley Basketball Association. The new season will start in July when school is back & run through to December. Please contact the club wattleglenbball@gmail.com or call Victoria 0439 132 746




COME & TRY WATER POLO!



**Sunday 19 June • 2pm - 4pm
@ Watermarc**

U12 (mixed girls & boys) team | **U14 girls & U14 boys teams**
• 10 - 12 year olds | • 13 - 14 year olds

- Swimming ability: squad or pre-squad level recommended
- Water polo equipment provided
- Training: Friday & Sunday
- Games: Sunday

For further details and to register

- dveaquatic.org.au
- [Facebook](https://www.facebook.com/dve.waterpolo) DVE Waterpolo
- waterpolo@dveaquatic.org.au

No water polo experience needed




Keeping it clear

Reliable & Local

We may be small in size but BIG on customer service & no lock-in contracts

- Regular Pool Cleans & Servicing
- One-off Pool Cleans & Servicing
- Equipment Installation / Repairs
- Solar Heating Installation / Repairs
- Pool Automation Setup

0408 596 194

jbpoolsvic@gmail.com
[facebook/JB-Pools](https://www.facebook.com/JB-Pools)



REGISTER NOW FOR SPRING NETBALL



**Register from U9 up to Open age group
(boys aged 13 and under welcome)**

**Train Thursday & Play Saturday
Cnr Foote & Anderson Streets, Templestowe**

To register & for more info:
www.panthersjunior.netballclub.com/registration

Registrations close: Friday 17 June 2022
Season starts: Saturday 16 July 2022

morrison kleeman 

 **Mums on the Run**
ASSOCIATION

Community News:

Research Tennis Club—Memberships now open

Located in beautiful Research Park we have 6 synthetic grass surface courts and BBQ facilities for member use.

Diamond Valley spring competition
team registration
NOW OPEN

Grab some friends/family to play fun and healthy competition tennis this July.
On your own? We'll endeavour to place you in a team.

Not confident enough for competition?

Then social tennis may be for you. We have an active group of social players so you can learn the game while having fun. Coaching options available.

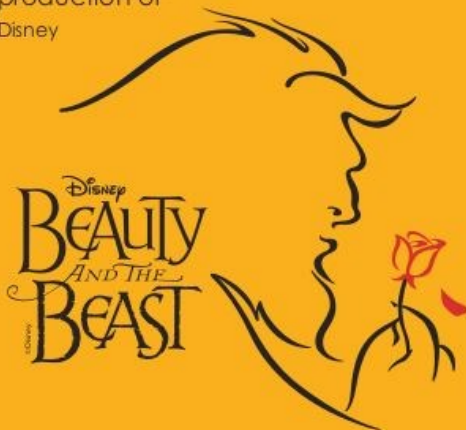


Casual court hire available

PLAY TENNIS NOW!
researchtennis.com.au,
or call 0427 057 260


RESEARCH TENNIS CLUB

Diamond Valley Singers
production of
Disney



Music by
Alan Menken

Lyrics by
Howard Ashman
Tim Rice

Book by
Linda Woolverton

Licensed exclusively by Music Theatre International (Australasia).
All performance materials supplied by Hal Leonard Australia

JULY 1-9 2022
TICKETS ON SALE NOW
www.dvsingers.org



Research Primary School — The Update

Community, Confidence, Ambition and Respect.

Upcoming dates: *(Covid restrictions permitting)

June	
Monday 13th	• Queens Birthday—no school
Tuesday 14th	• Professional Planning Day—No students at school
Thursday 16th	• Yrs 5 & 6 Research Ridge Day —rescheduled to Friday July 22
Friday 17th	• Interschool Sport Away RPS vs Eltham College
Tuesday 21st	• Yrs 3—6 Parents : Camp Information session (time to be confirmed)
Friday 24th	• Last day of Term 2 2.30pm finish
July	
Monday 11th	• First day of Term 3
Friday 22nd	• Yrs 5 & 6 Research Ridge
Monday 25th	• Yrs 1—2 Balance Gym starts
August	
Wednesday 3rd	• EPDSSA Athletics
Thursday 11th	• Whole School Production (Prep—6)
Friday 19th	• Curriculum Day— No students at school
Friday 19th	• RPS 133rd Birthday
Monday 22nd	• P—6 Author Visit
Wednes 31st—Fri 2nd Sept	• Yrs 3—6 Camp Weekaway
September	
Thursday 8th	• Alteration to school day— PST Interviews (Students attend interviews only)
Friday 16th	• Last day of Term 3 2.30pm finish
October	
Monday 3rd	• First day of Term 4
Friday 13th	• Yrs 3 & 4 Balance Gym begins (tbc)
Monday 31st	• Curriculum Day— No students at school
November	
Tuesday 1st	• Melbourne Cup Day - no school
December	
Thursday 15th	• Yrs 5 & 6 Funfields TBC
Tuesday 20th	• Last day of school year and Term 4 1.30pm