



## OFFICE UPDATE

*A school that values Community, Confidence, Ambition and Respect.*

### Term 1, Week 4

Monday:

- Nude Food Monday

Tuesday:

- Canteen countersales open
- Yrs 5&6 Sovereign Hill

Wednesday:

- Preps to Collingwood Farm
- District Cross Country

Thursday:

- Yrs 1&2 Chesterfield Farm

Friday:

- Curriculum Day No Students at school
- Canteen Closed
- Baked goods can be delivered to the office between 9am & 4pm



Education Week is coming -  
so is The Book Fair

**Phone:** 9437 1917

**Address:** 1570 Main Road, Research, Victoria, 3095

**Email:** [research.ps@education.vic.gov.au](mailto:research.ps@education.vic.gov.au)

**Website:** [www.researchps.vic.edu.au](http://www.researchps.vic.edu.au)

**Compass:** <https://researchps-vic.compass.education/>

**Social:** [www.facebook.com/researchps](https://www.facebook.com/researchps)

**The Update:** Published fortnightly

## School Administration

### EDUCATION WEEK— OPEN MORNING

Do you have friends or family members considering sending their little ones to RPS, 2023 or in the future?

Then let them know they are welcome to visit us on our open morning

**Thursday 26th May — 9.15am to 11am**

### Professional Planning Day

School Council have approved a Professional Planning Day on Tuesday 14 June, therefore no children at school. Also please note that next Friday, 20 May, is a Curriculum Day at RPS and a 'no children at school' day.

### Car Park

We have hit a bump. In typical Research fashion, whilst digging, the team has unfortunately found an issue with some of our pipes. If they are not repaired now, then more issues will arise in the future. Short of the long is that the carpark will be out of action for longer than anticipated with an overall completion date scheduled for **Tuesday 17<sup>th</sup> May**.

Therefore, please note the following:

- \* Entire car park **closed Friday and Monday** (13<sup>th</sup> and 16<sup>th</sup>)
- \* **EVERYTHING is open** for action on **Tuesday 17<sup>th</sup> May**

### RATs

A box of 5 RATs have been sent home with students tonight. Please check your child's bag.



## Research Primary School — The Update

*Community, Confidence, Ambition and Respect.*

### Working with Children Check

All volunteers and helpers in schools must hold a current Working with Children Check, this check is free and applications can be made via this link.

<https://www.workingwithchildren.vic.gov.au/individuals/applicants/how-to-apply-1>

### PE News

#### Interschool Sport

This week we play at home against Our Lady's. Football will be played at Research Park and Soccer will be played at Eltham North.

Friday 20th May is a bye and Friday 27th May we have an away game against Eltham Primary.

Please note : It is the bus company's requirement that all year 3—6 students wear a mask while travelling on buses.

#### District Cross Country

Next Wednesday (18<sup>th</sup> May) our Research Primary Cross Country Team will head off to Lower Eltham Park to compete in the district cross country carnival. The event will run from 12:30 until 2:30pm. Thank you to our parents helpers and good luck to all our competitors! Have a great day.

### Excursions are back!

#### Preps—Collingwood Children's Farm

You cannot imagine the excitement as the Preps prepare for their first ever bus trip AND excursion to Collingwood Children's Farm next Wednesday. They have been counting down the days for weeks. At the farm we plan to introduce the children to the usual farm animals and discover that all pigs are not pink, a sheep's wool is amazingly thick & soft and that milking a cow feels..... **amazing**. We will try to extend their ideas on why we have farms, (not just so we can go to see the animals or to give the animals a nice home) and how they are important to us.

- **We CANT' wait !!** -

#### Years 1 & 2—Chesterfield Farm

As part of the Year 1/2 Integrated Studies focus on Living Things, the Year 1s and 2s will be visiting Chesterfield Farm in Scoresby. This is taking place on Thursday 19<sup>th</sup> May. The day will give the students an experience of farm life and how farmers provide for domesticated animals. For many students it will be their first opportunity to jump on a bus and head out on an excursion. The children have already expressed their excitement for the day. **A lot of children are very excited about the bus ride!** Thank you for the parents who put their hands up to help out on the day.

#### Years 5 & 6—Sovereign Hill

Eureka! There is gold in Victoria! As part of the Year 5/6 unit on the Australian Goldfields, we will be visiting Sovereign Hill, Ballarat next Tuesday. The students will experience first-hand life on the goldfields in the 1850s. They will be panning for gold, visit an underground mine and experience 'gold fever' in tent city. The 5/6s are hoping to strike it rich and find their own '**Welcome Stranger**'.

### Education Week 2022 is here!

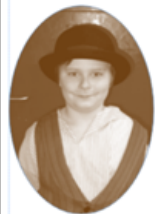
This year's theme is about celebrating Victoria's 150 Years of Public Education in Victoria. Did you know that under the *Education Act 1872*, Victoria made education free and compulsory for all children aged 6 to 15 years. Our school has been part of Victoria's education story for 133 years. Research Primary was established in 1889 during the gold mining days.

We're celebrating Education Week 2022 from 22–28 May. During the week, we are doing:

Tuesday 24<sup>th</sup> May – whole school picnic

Wednesday 25<sup>th</sup> May - 'Step Back in Time' Day and activities (Dress Up)

Friday 27<sup>th</sup> May – sports afternoon (Prep – 3 - at school, 4 – 6 Interschool Sport)



**'Step Back in Time' 25th May** - We would like the students to come dressed in 'olden day' dress as if they were going to school in the **mid to late 1800s**. We will have a whole school parade and the students will experience activities related to 'olden days'.

We look forward to seeing everyone in 'olden day' dress on Wednesday 25<sup>th</sup> May.

### Library News

#### **Book Fair 2022 – Wednesday 25 May – Tuesday 31 May**

The Scholastic Book Fair is coming soon, and it's going to be a cool place to discover hot books! You'll be taken to a resort overflowing with a treasure of fun and filled with the latest books for your next reading adventure.

Catalogues will be sent home next week so students can see what is available for sale. The more sales we make, the more credit the school gets back to buy new books for our library.

Thank you to those who have already volunteered. If anyone else can assist with sales, please contact Mandy via email at [research.ps@education.vic.gov.au](mailto:research.ps@education.vic.gov.au)

Viewing & Sales (*morning sessions are for parents only*)

Date	Time	Helpers
Wed 25/5	3:30 - 4pm	Jess Hayes      Ash McAdam
Thur 26/5	9-9:30am 3:30 - 4pm	Vannie Ip-Winfield      Gaby Cjesus Lisa Blake
Fri 27/5	9-9:30am 3:30 - 4pm	Gaby Cjesus      Lena Lennartsson Jess Hayes      Leah Campbell
Mon 30/5	9-9:30am 3:30 - 4pm	Penny Love      Linda Hawkins      Kristy Steiner Linda Hawkins
Tue 31/5	9-9:30am	Penny Love



### PFC News

Hi there, the PFC will be running a BBQ at school on Election Day, make sure you vote early to enjoy one of our famous egg and bacon rolls. The big question is, will the onions be on top or at the bottom of the sausage 😊

We are also putting together a cake stall. Cakes are a huge seller, everyone enjoys the taste of some home baking. You would have received a flyer in your child's bag asking for donations of baked goods – please pop into the school office and collect a plate & bag – let's start baking. Kind Regards, **Kim Temple, PFC President**

### Canteen News

Next Canteen Dates:

Countersales **Tuesday 17 May & Tuesday 24 May** Lunch Orders & Countersales **Friday 27 May**

If you are in a position to offer a little help please contact the school, they will pass your details on.  
research.ps@education.vic.gov.au - please make sure you have a current working with children's check. **Gabi F**

### Sahara—Chopping her locks at school—Thursday 19th May



**I'm chopping  
my locks.**

Help me raise funds  
for kids in need.



**Sahara** is donating their hair

And aiming to raise **\$3,000+**

**Support my chop, every bit counts!**

<https://hairwithheart.variety.org.au/fundraisers/saharamacaffer/hair-with-heart>

The chop will take place on Sahara's 6th birthday  
- Thursday May 19th 2022

At Variety - the Children's Charity we believe all kids deserve a fair go.  
This is why we support kids living with sickness, disadvantage and special needs.





## Community News:



**TENNIS LESSONS**  
RESEARCH TENNIS CLUB

WE SPECIALIZE IN LESSONS FOR BEGINNERS

**SPECIAL OFFER!!**  
ENROL NOW & RECEIVE A 30% DISCOUNT AND A NEW RACKET FOR FREE!

FOR MORE INFORMATION  
TEL: 9432-3706  
WEB: WWW.TOPLINETENNIS.COM  
EMAIL: INFO@TOPLINETENNIS.COM



**JB Pools**  
*Keeping it clear*

**KEEP YOUR POOL RUNNING OVER WINTER!!**

Give John a call to keep your water balanced and equipment running!

**JB Pools reliable & local.**

**0408 596 194**  
[jbpoolsvic@gmail.com](mailto:jbpoolsvic@gmail.com)  
[facebook/JB-Pools](https://www.facebook.com/JB-Pools)

## Parenting Support Term 2 2022

### Parent Support Seminars

#### Helping your child with their emotions

##### Developing emotional intelligence

- Understand why feelings matter
- Help children identify and manage their feelings
- Learn ways to develop our child's emotional skills

**When:** Wednesday 18 May

**Time:** 9.30am to 11.30am

**Where:** healthAbility, 917 Main Rd, Eltham

**Bookings:** Essential via

[trybooking.com/BYZWX](https://trybooking.com/BYZWX)

#### Bringing out the best in your child's behaviour

- How to encourage desirable behaviour
- Encourage your child to cooperate
- Using parenting tips for challenging children

**When:** Wednesday 25 May

**Time:** 9.30am to 11.30am

**Where:** healthAbility, 917 Main Rd, Eltham

**Bookings:** Essential via

[trybooking.com/BZDJJ](https://trybooking.com/BZDJJ)

#### Getting your kids to listen

##### How to give great instructions

- How to give great instructions
- Ways to encourage cooperation
- Common mistakes to avoid

**When:** Wednesday 1 June

**Time:** 9.30am to 11.30am

**Where:** healthAbility, 917 Main Rd, Eltham

**Cost:** \$25 per adult, \$40 couple and \$16.50 concession

**Bookings:** Essential via

[trybooking.com/BZDMA](https://trybooking.com/BZDMA)

#### Building your child's resilience

- What is resilience
- Where does resilience come from
- Why is resilience important
- How you can build resilience in your child
- Tips for building supportive relationships
- Tips for building confidence

**When:** Wednesday 8 June

**Time:** 9.30am to 11.30am

**Where:** healthAbility, 917 Main Rd, Eltham

**Bookings:** Essential via

[trybooking.com/BZFXA](https://trybooking.com/BZFXA)



**Warrandyte  
High School**

+613 9844 2749  
Fax: +613 9844 1813  
[whs@warrandytehigh.vic.edu.au](mailto:whs@warrandytehigh.vic.edu.au)  
[www.warrandytehigh.vic.edu.au](http://www.warrandytehigh.vic.edu.au)  
cnr. Warrandyte & Alexander Roads,  
Warrandyte 3113

### The Warrandyte High School Learning Excellence Academic/ Accelerated Program (LEAP)

- A program for high achieving students
- Students are extended, accelerated and challenged academically in the areas of English, Mathematics, Science and Humanities
- A learning environment for like-minded, highly motivated peers.



Participation into the  
Year 7 LEAP  
(Accelerated Learning Program)  
is via select entry

Testing Day will occur in September 2022

It is essential to register online  
via our website

See our website for more information:  
[www.warrandytehigh.vic.edu.au](http://www.warrandytehigh.vic.edu.au)

Have any questions? Would love to hear from you.  
Send me an email

[joseph.caruana@education.vic.gov.au](mailto:joseph.caruana@education.vic.gov.au)



## Research Primary School — The Update

*Community, Confidence, Ambition and Respect.*

Upcoming dates: \*(Covid restrictions permitting)

May	
Tuesday 17th	• Yrs 5 & 6 Sovereign Hill
Wednesday 18th	• Preps Excursion Collingwood Farm
Wednesday 18th	• District Cross County
Thursday 19th	• Yrs 1 & 2 Chesterfield Farm
Friday 20th	• Curriculum Day - <b>No students at school</b>
Saturday 21st	• PFC Election BBQ and Cake Stall at School
Tuesday 24th	• Whole School Picnic for Education Week
Wednesday 25th	• <b>Step Back in Time Day—Dress Up</b>
Wednesday 25th	• Book Fair begins
Thursday 26th	• Open Morning 9.15am—11am
Friday 27th	• P—3 Sports Afternoon at school
Friday 27th	• Interschool Sport Away RPS vs Eltham PS
June	
Wednesday 1st	• Years 3 & 4 Melbourne Museum
Friday 3rd	• Interschool Sport Away RPS vs St Thomas
Tuesday 7th	• Yrs 3-6 RPS Athletics, Wilinda Park
Thursday 9th	• School Photos 9am—Ordering information sent separately
Friday 10th	• Interschool Sport Away RPS vs Eltham North PS
Monday 13th	• Queens Birthday—no school
Tuesday 14th	• Professional Planning Day— <b>No students at school</b>
Thursday 16th	• Yrs 5 & 6 Research Ridge Day
Friday 17th	• Interschool Sport Away RPS vs Eltham College
Friday 24th	• Last day of Term 2 2.30pm finish
July	
Monday 11	• First day of Term 3
Monday 25th	• Yrs 1—2 Balance Gym starts
August	
Thursday 11th	• Whole School Production (Prep—6)
Friday 19th	• Curriculum Day— <b>No students at school</b>
Friday 19th	• RPS 133rd Birthday
Wednes 31st—Fri 2nd Sept	• Yrs 3—6 Camp Weekaway
September	
Thursday 8th	• Alteration to school day— PST Interviews ( <b>Students attend interviews only</b> )
Friday 16th	• Last day of Term 3 2.30pm finish
October	
Monday 3rd	• First day of Term 4
Friday 13th	• Yrs 3 & 4 Balance Gym begins (tbc)
Monday 31st	• Curriculum Day— <b>No students at school</b>
November	
Tuesday 1st	• Melbourne Cup Day - no school